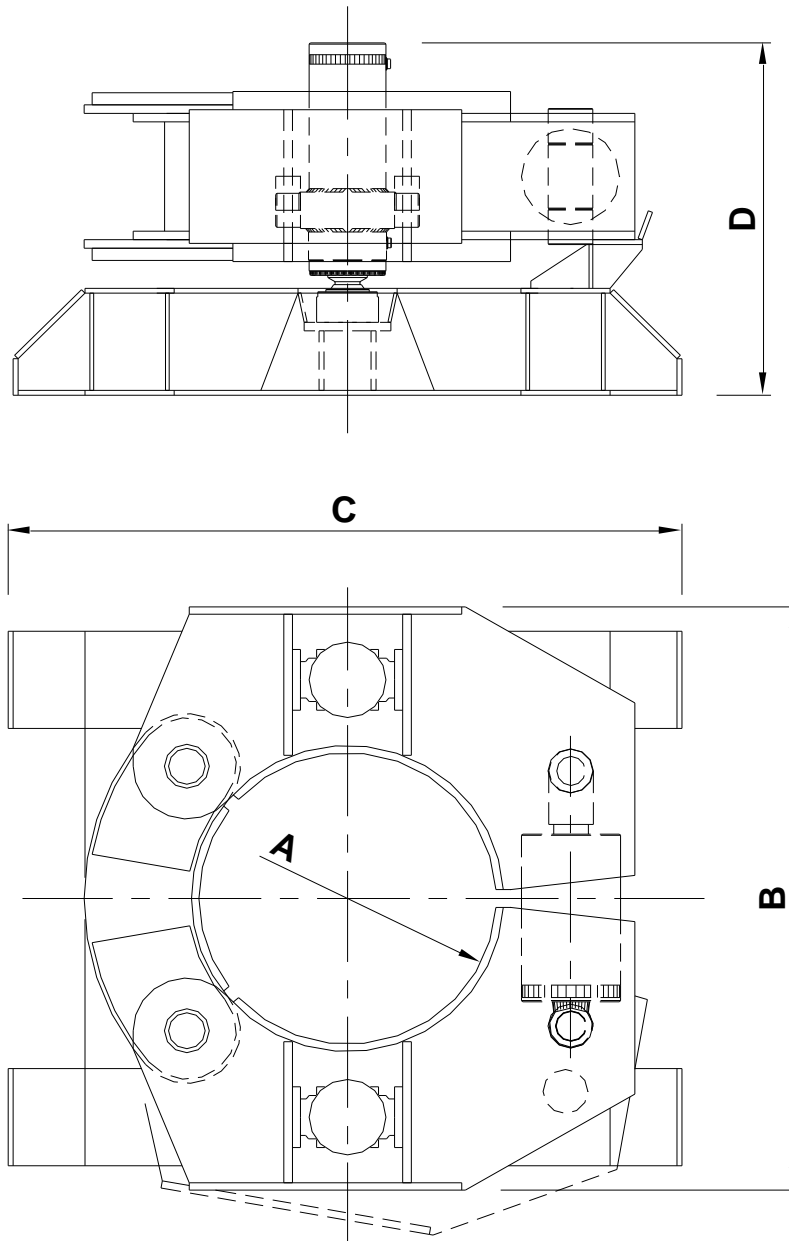


STOP END EXTRACTOR
ESTRATTORE PER TUBI SPALLA



STOP END PIPE EXTRACTOR – Technical Data

Descriptions	ref.	u/mis.				
Casing diameter	A	mm	600	800	1000	1200
Minimum recommended diameter	B	mm	400	500	600	800
Width	C	mm	1720	1920	2120	2350
Lenght	D	mm	2200	2300	2500	2700
Height	E	mm	1250	1250	1300	1450
Lifting force		kN	1750	2150	2720	3350
Lifting stroke	L	mm	500	500	550	600
Clamping force		kN	1040	1300	1651	2050
Number of clamp segments		Nr.	3	3	3	3
Maximum pressure		Bar	320	320	320	320
Weight		Ton	3,8	5	6,8	8,5
The above specifications are indicative only and in no way binding. The right is reserved to alter the data without prior notice						

PRINCIPALS DESCRIPTION

- The hydraulic extractor has been designed for the extraction of stop end pipes from diaphragm wall foundation sunk to depths of up to 50/60 meters.
- The clamp assembly it's in 3 articulated segments, constructed to provide appropriate tolerance and grip on the casing tube.
- A brake assembly composed of 4 mechanical wedge.
- Hydraulic plant for the supply of hydraulic oil, at pressure, to the hydraulic rams either by means of the hydraulic system of the power pack (separate supply).
- A command panel (separate supply).

